



# FDMS P&ID System

Dynastress; 55 E. Mill Street; Akron, Ohio 44308

Email: [Info@dynastress.com](mailto:Info@dynastress.com)

## Graphic

### Systems:

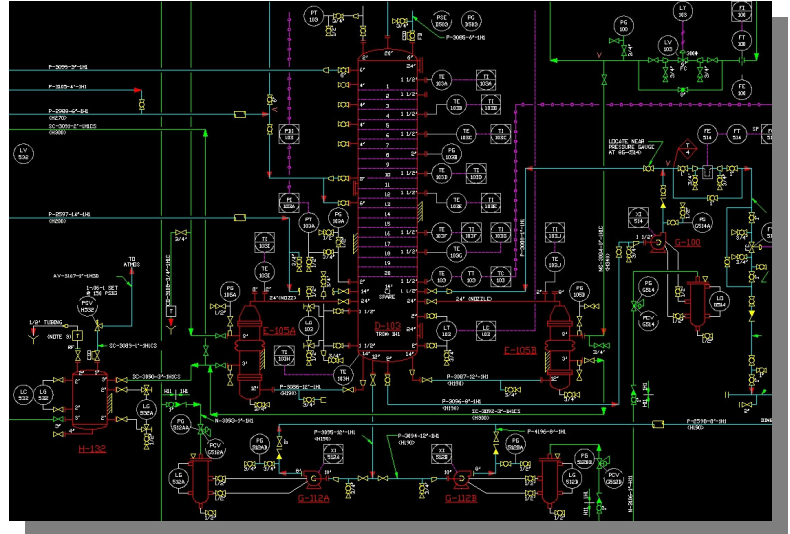
AutoCAD®  
& Windows 98,2000,  
XP

### Features:

- Create your own items by unique build routines
- Over 500 Symbols through the on screen menus
- Efficient P&ID creation through automated functions
- Insert data on drawing with minimum strokes
- Direct data links
- Extraction routine for drawing data
- Optional AUTO number generation for Equipment, Instrument and Lines
- Full AutoCAD® functionality

FDMS P&ID is a menu driven system designed to draw and then maintain Process & Instrumentation diagrams and process flow diagrams. The system is linked to rational databases to provide on-line access to technical specs, maintenance data, vendor data, and detailed information on all your equipment, instruments, and flow lines. This link allows for the editing of data inside graphics or outside, while textural data on the drawing is automatically updated. Developed by experience in the industry, designed for simplicity in use; a package to meet the needs and goals of today's requirements.

All ISA and commonly used symbols, including user-defined symbols are available at the pick of your mouse. You easily draw flow lines, automatically attaching critical information. Flow lines are automatically broken during symbol placement. Equipment and instruments are created by symbol or selection of existing graphics with information accessible from external databases relating to this item. Text associated with a piece of equipment or instrument is placed by touching the item then selecting the location for the text.



405

Vessel
Help Update Exit

**Tag Data**  
 Tag: T-1  
 Category: VESSEL  
 Type: GENERAL

Main
Jacket - Shell
Press-Temp
General
Notes

Service:

Manufacturer:

Model num:  Size:

Status:

Data

Status

**Drawings**

Pid:

Location:

Detail:

Load Drawings

**Location**

Unit:

Area:

Elevation:

Location Data

**Revision**

Rev:

Date:

By:

Revision

**Process**

Procedures

Specifications

## Data

FDMS - Instrument & Equipment is the database management system for maintaining detailed Instrument & Equipment data. This powerful tool provides the facility engineering, maintenance and design environments on-line access to technical specs, maintenance data, vendor data and detailed information on all your instruments and equipment.

The system consists of a series of relational databases for general and specific types of instruments and equipment, by incorporating a main database linked to specific instrument and equipment databases.

This package is designed to provide fast, easy access to data for the entire plant team, with easy to follow on-screen panels. With the touch of an on-screen pushbutton or selection from a pick list, any user may quickly access the information needed.